

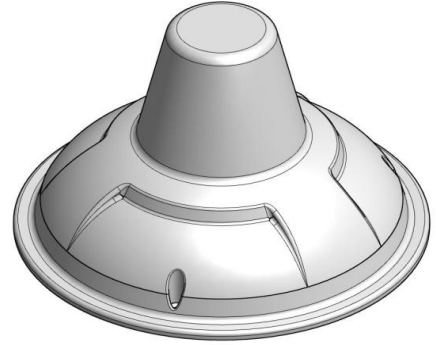
Multi-Band Omni Antenna

824~894 MHz, 1710~2170 MHz, 2300~2690MHz / 2, 3, 5dBi

CPWW-IDT-35

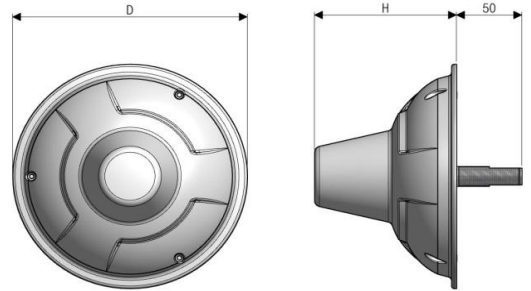
i. Electrical Specification

Frequency Range	824~894	1710~2170	2300~2690
Polarization	Vertical	Vertical	Vertical
Band Width	70MHz	460MHz	390MHz
Gain	≥ 2 dBi	≥ 3 dBi	≥ 5 dBi
Beam width	Horizontal	360°	
	Vertical	80°±20°	55°±15°
F-B ratio (Horizontal & Vertical)	-	-	-
VSWR	1:1.5		
Impedance	50 Ω		
IMD (3rd)	≤ -150dBc @ 2x30dBm		
Maximum input power	50 W		

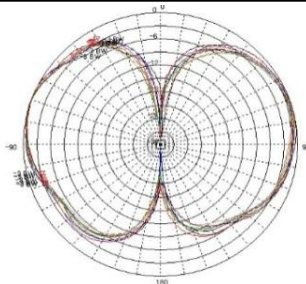


ii. Mechanical Specification

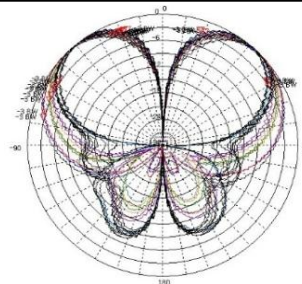
Radom Dimension (DxH)	180 x 108 mm
Weight (Include bracket)	≤ 300 g
Connector Type	N-J (Female)
Radome Material	ASA
Radome Color	Cool Gray 1C
Mechanical Down Tilt	-
Temperature	-40 °C ~ 70 °C
Packing Size (H x W x D) 10SET	-
Packing Weight 10SET	-



iii. Radiation Pattern



Vertical Pattern
(Low Band)



Vertical Pattern
(High Band)